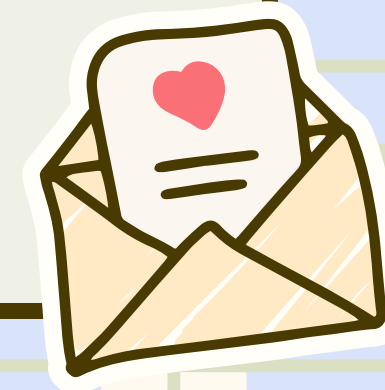
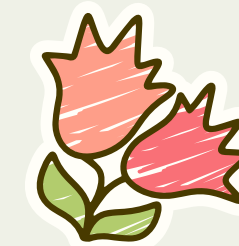
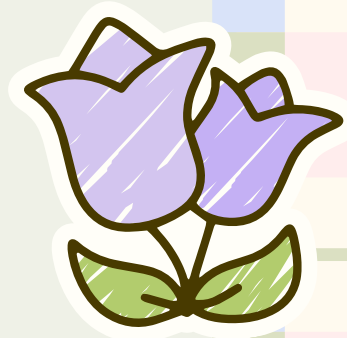
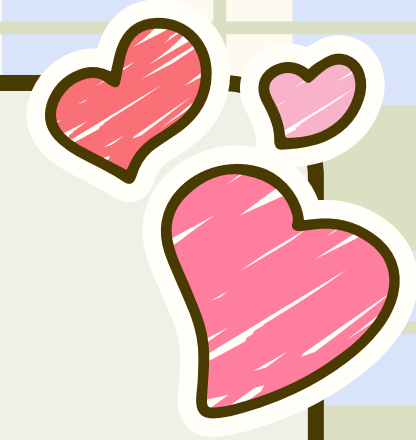
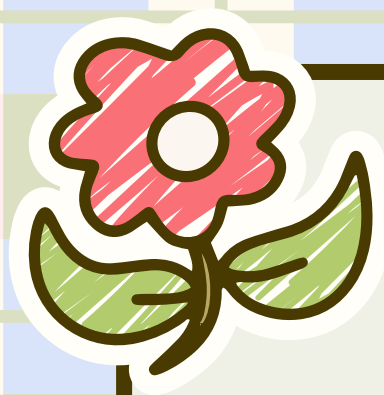


HOW TO INTERACT WITH OUR BUDDIES

Providing Smiles & Understanding Needs

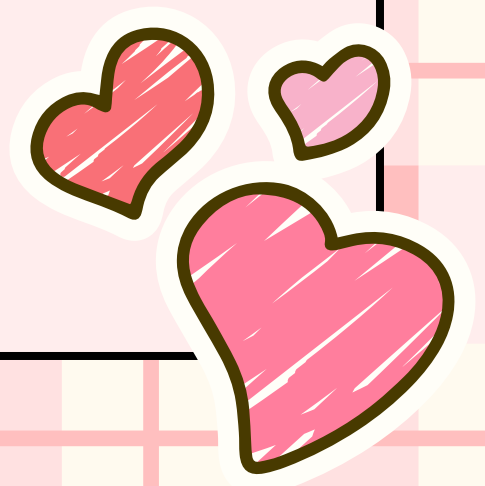
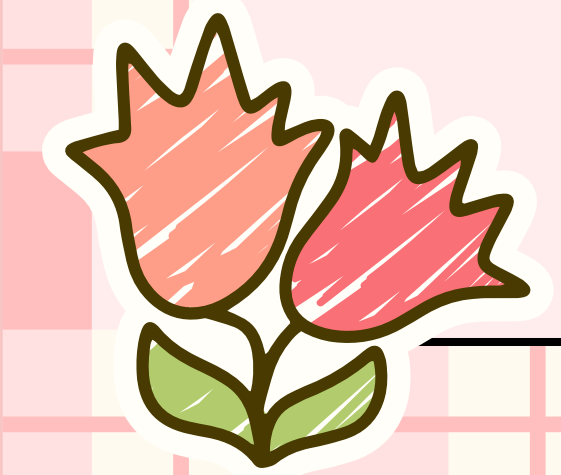
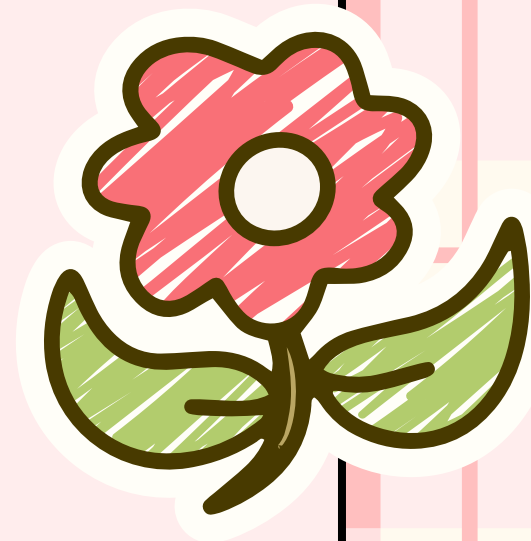
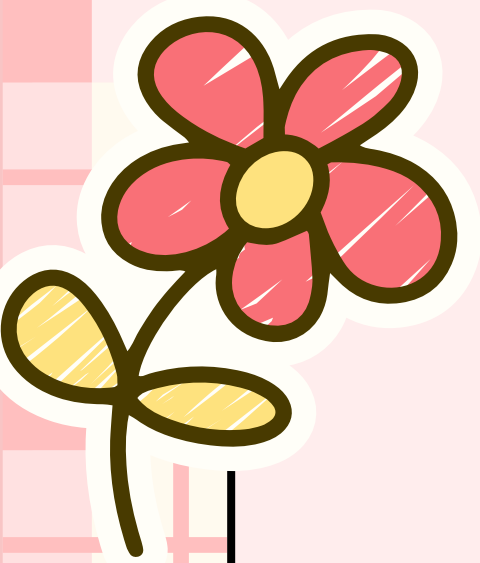


PERSON FIRST LANGUAGE

Person first language prioritizes the person before their diagnosis (ex: autistic johnny vs johnny has autism)!

Why do we use person first language?

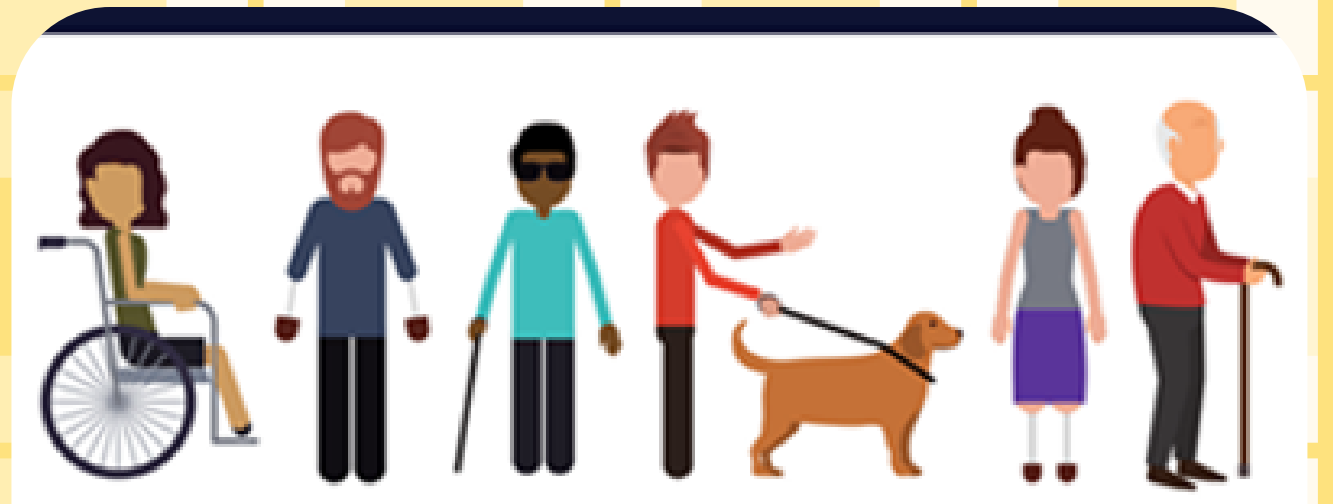
- Our buddies are so much more than their diagnosis!
- Encourage them to be comfortable in their environment
- Avoiding stereotypes and labels
 - We NEVER use the R-word
- They are people and deserve the same respect as you and I!!!















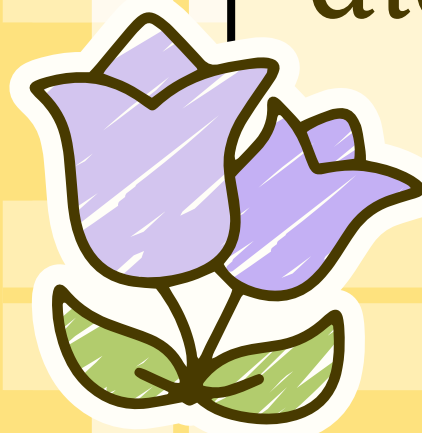
EXAMPLES

Person first language is the **ONLY** way you will talk to/about our buddies in or out of PSUN!

DISCLAIMER: You should never discuss a buddies diagnosis unless there is a medical emergency. We are their friends and treat them all equally without consideration of diagnosis!!



INCORRECT	CORRECT
 HANDICAPPED OR DISABLED PEOPLE	 PEOPLE WITH DISABILITIES
 HE IS MENTALLY RETARDED OR A MONGOLOID	 HE HAS A DEVELOPMENTAL OR INTELLECTUAL DISABILITY
 SHE IS WHEELCHAIR-BOUND	 SHE USES A WHEELCHAIR
 HE IS A CRIPPLE	 HE HAS A PHYSICAL DISABILITY
 MIDGET OR DWARF	 A PERSON OF SHORT STATURE
 HE SUFFERS FROM HEARING LOSS	 HE IS HARD OF HEARING



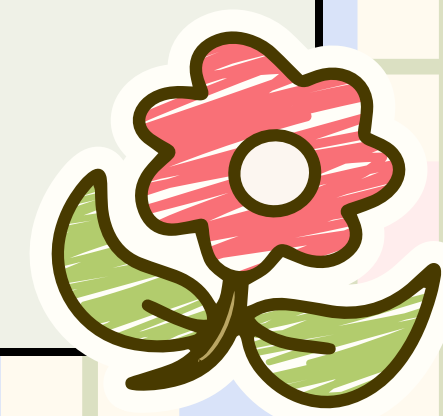
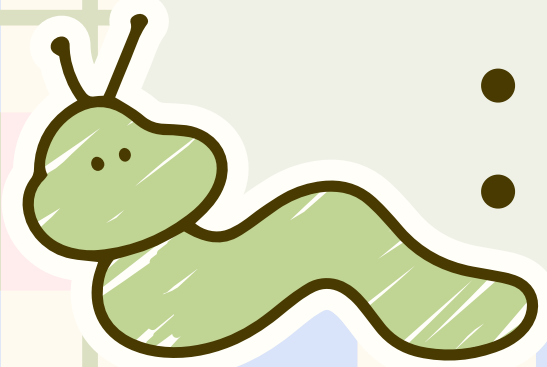


CONVERSATION WITH OUR BUDDIES

Some of our buddies have interests that are typically had of people younger than them (dolls, coloring, children's music/tv shows), but this does not mean we speak to them as if they are that age!!!

Important things to remember:

- NO BABY TALK!!
- Speak to them as their chronological age
- Talk to THEM! Even if they have limited verbal communication still speak to them not a caregiver/parent
- Be patient and give them the time to get their thoughts out
- Get to know them and their interests!!



INTERACTION

The main goal of PSUN events is to be a best friend to the buddies and you should engage with them as such!

- Don't be afraid to set boundaries! (ex: "hey im not comfortable with a hug today, can we high five?")
- Avoid name calling and sarcasm
- Provide them assistance to make all activities accessible for them (hand over hand, mobility, and sensory assistance)
- Redirection (ex: "hey lets go check out the craft table!")
- Encourage autonomy and independence!
- Ask for help if you need it!

RECAP!

- Our buddies are so much more than their disability!
- Be a friend
- No buddy should be left alone at a park day
- NO BABY TALK OR THE R-WORD. EVER.
- Appropriate interactions are a MUST
- Engage, engage, engage!

